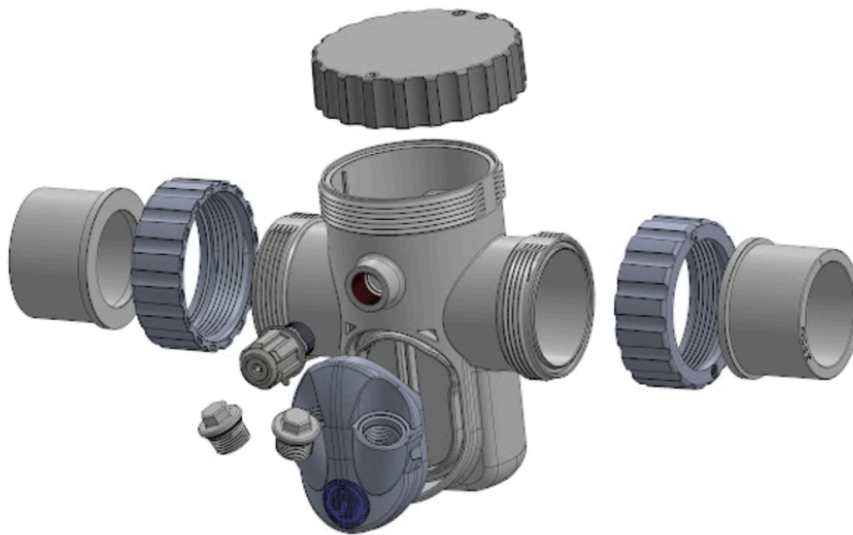


# THE INSTALLATION MANUAL



## CHEMISTRY SENSING FLOW CELL



### PHONE CONTACT

267-810-0600

### LOCATION

560 Union Square Dr  
New Hope, PA 18938

### EMAIL CONTACT

[info@poolside.tech](mailto:info@poolside.tech)

[support@poolside.tech](mailto:support@poolside.tech)

[marketing@poolside.tech](mailto:marketing@poolside.tech)

[sales@poolside.tech](mailto:sales@poolside.tech)

### SOCIAL MEDIA

[Facebook](#) @poolside.tech

[Instagram](#) @poolside.tech

[LinkedIn](#) @poolside-tech

[YouTube](#) @poolsidetech

## IMPORTANT WARNING AND SAFETY INSTRUCTIONS

### READ AND FOLLOW ALL WARNING AND SAFETY INSTRUCTIONS



#### DANGER

**SERIOUS BODILY INJURY OR DEATH CAN RESULT IF THIS PRODUCT IS NOT INSTALLED AND USED CORRECTLY.**



#### NOTICE

**INSTALLERS, MAINTAINERS AND OWNERS MUST READ THESE WARNINGS AND ALL INSTRUCTIONS BEFORE USING THIS PRODUCT. This Guide provides installation instructions for the product.**



#### NOTICE

**This product is intended for use in swimming pool applications only.**



#### WARNING

Most states and local codes regulate the construction, installation, and operation of public pools and spas, and the construction of residential pools and spas. It is important to comply with these codes, many of which directly regulate the installation and use of this product. Consult your local building and health codes for more information.

**This guide provides installation instructions for the Poolside Tech Chemistry Sensing Flow Cell. Consult Poolside Tech for any questions regarding this equipment or its operation.**

**Attention Installer:** This guide contains important information about the installation and safe usage of this product. Give this guide to the owner and/or operator of the product after installation.

**Attention:** This manual contains important information that will help you in maintaining this product. Please save it for future reference.

**Attention:** Read the entire Guide and all associated warning labels before installing this product or attempting to use, service or adjust. Also read the operating instructions and warnings for all equipment in the pool circulating system before operating. Failure to follow safety warnings and instructions can result in severe injury, death, or property damage.



#### WARNING

This product is designed and manufactured for safe and reliable service when installed, operated and maintained according to the information and installation codes referred to in this Guide.



#### DANGER ELECTRICAL SHOCK HAZARD

#### **Risk of Electrical Shock or Electrocution!**

**Always disconnect power at the circuit breaker** before servicing The Attendant or any other equipment that is part of the pool circulation system. Improper installation can create an electrical shock hazard that can result in death or serious injury.

## CUSTOMER SERVICE AND TECHNICAL SUPPORT

+1 (267) 810-0600  
[support@poolside.tech](mailto:support@poolside.tech)  
<https://poolside.support>

**Poolside Tech**  
560 Union Square Drive  
New Hope, Pennsylvania 18938

## Table of Contents

<b>Materials Needed for Installation</b>	<b>4</b>
What's In The Box	5
<b>Installation Instructions</b>	<b>6</b>
Flow Cell Placement	6
Flow Cell Plumbing	7

# Materials Needed for Installation

- PVC pipe cutter / hack saw
- PVC primer
- PVC glue
- Silicon lubricant for O-rings
- Flathead screwdriver or ½" socket (12mm) to remove the winterization plugs for the chemical feed port, pH probe port, and ORP probe port if you will be utilizing those.
- Any items that would be required for installation per local code.

**Before carrying out any part of the installation, you MUST power down The Attendant controller and all filter pumps.** Powering off pumps will relieve pressure from the pool filtration system.

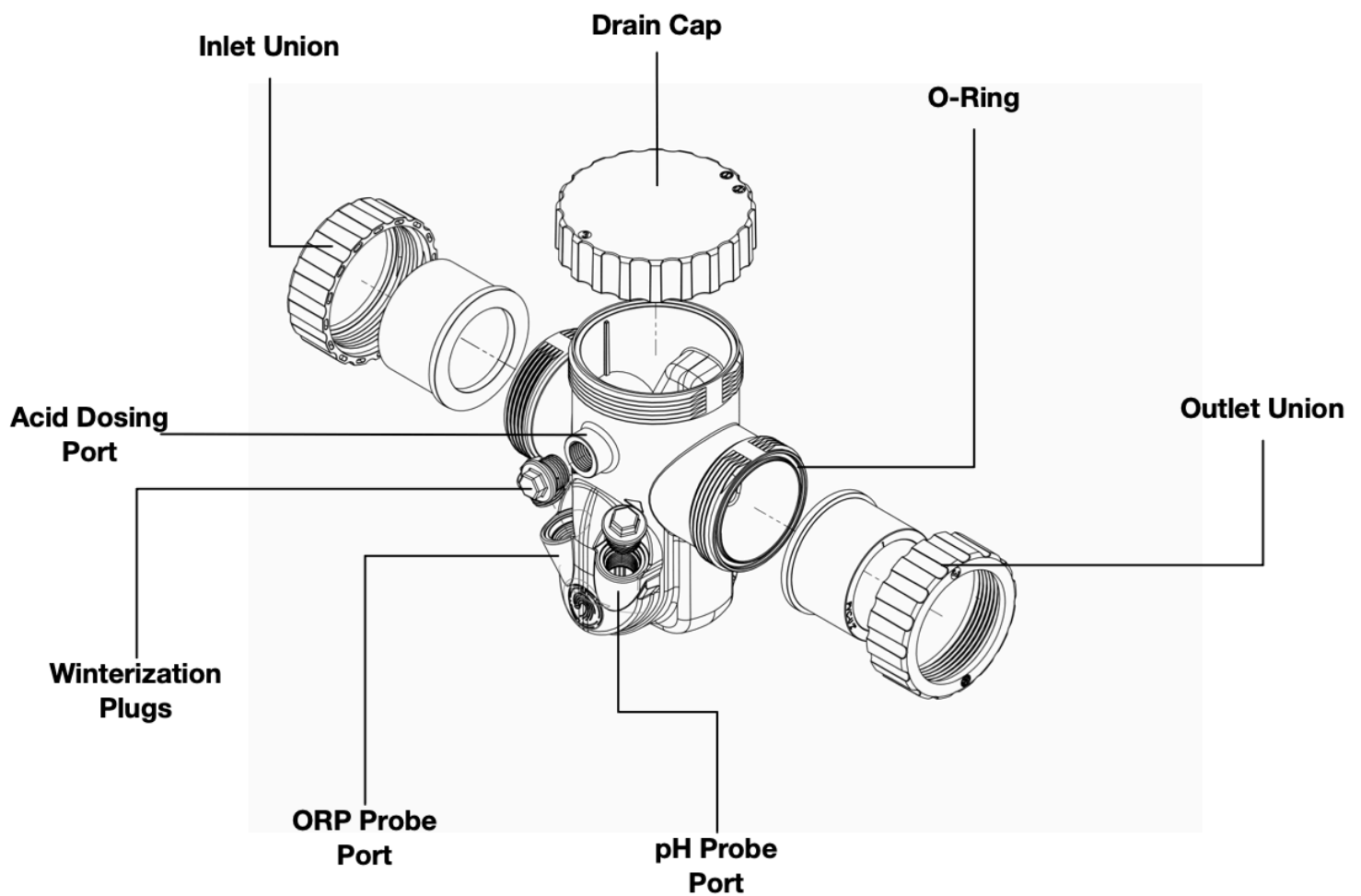


## **WARNING**

**If you will be using Poolside Tech pH and ORP sensors in the Flow Cell – DO NOT USE TEFLON TAPE ON THE THREADS OF THE PROBES.**

## What's In The Box

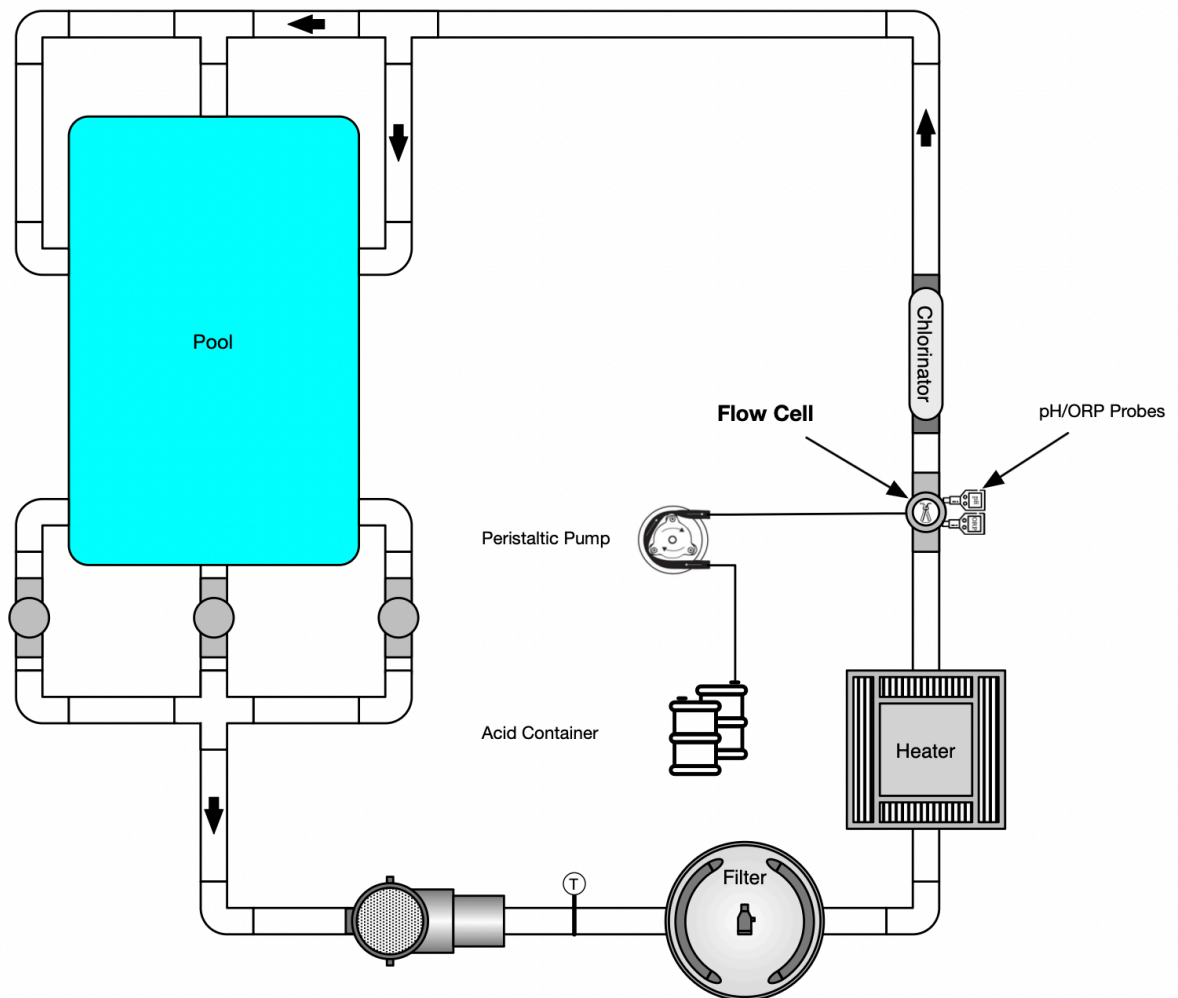
- Flow cell body
- Drain Cap
- 2" PVC unions with O-rings
- Acid dosing fittings
- pH and ORP sensor plugs (pre-installed)
- Acid feed port plug (pre-installed)



# Installation Instructions

## Flow Cell Placement

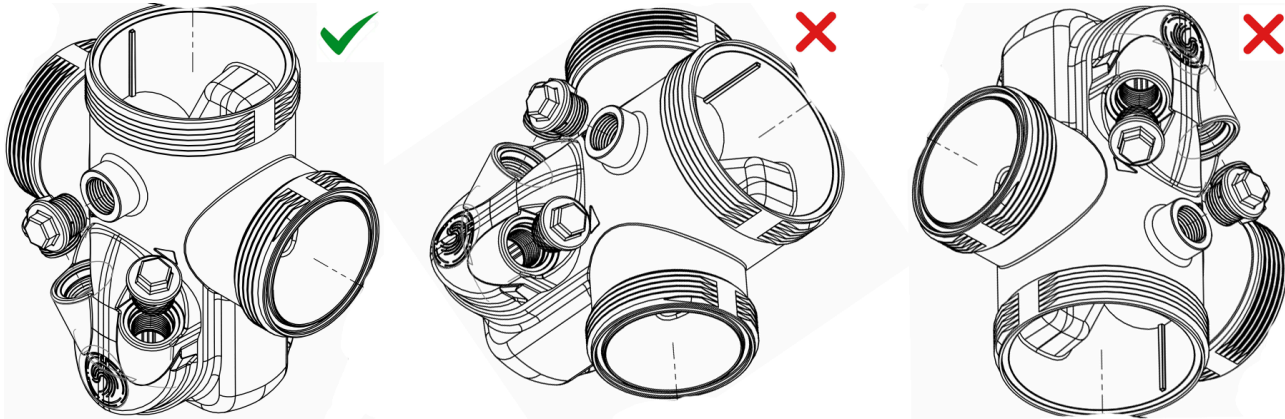
The flow cell must be installed into your pool plumbing after the filter and before any chemistry dosing equipment such as salt chlorine generators, chlorine pumps, AOP, Ozone generators, etc. Please reference the recommended installation placement on the schematic below.



*Note: If you plan to add the Poolside Salt Chlorine Generator cartridge to the flow cell in the future, we recommend placing the flow cell just before any existing chlorine generators. This will make it easier to remove and upgrade later.*

## Flow Cell Plumbing

12 inches (30.5 cm) of straight plumbing is required for installation. Please be sure to have the flow cell orientated such that the cap is facing up.



1. Using the template provided with your flow cell mark the required distance ( $7 \frac{5}{8}$  inches / 19.3 cm) on your plumbing.



2. Using a hack saw, cut the pipe in the marked location.



3. Slip the barrel nuts onto each end of the pipe.



4. Coat the pipe and union collars with PVC primer and glue. Slide collars over the pipe and hold in place until a solid connection is made. Please wait a minimum of 10 minutes to allow the glue to cure.





5. Coat O-Rings with silicone lube. Place the O-Rings into their channels on the flow cell and tighten the barrel nuts.



**PLEASE KEEP THE PLUGS PROVIDED FOR ACID DOSING AND SENSOR  
PORTS TO RE-USE WHEN WINTERISING THE CELL**

# POOLSIDE *Tech*



## PHONE CONTACT

267-810-0600

## LOCATION

560 Union Square Dr  
New Hope, PA 18938

## EMAIL CONTACT

[info@poolside.tech](mailto:info@poolside.tech)

[support@poolside.tech](mailto:support@poolside.tech)

[marketing@poolside.tech](mailto:marketing@poolside.tech)

[sales@poolside.tech](mailto:sales@poolside.tech)

## SOCIAL MEDIA

[Facebook](#) @poolside.tech

[Instagram](#) @poolside.tech

[LinkedIn](#) @poolside-tech

[YouTube](#) @poolsidetech