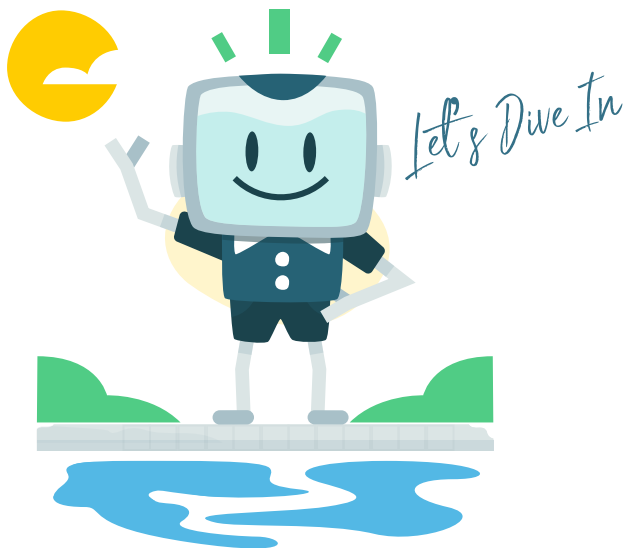


# QUICKSTART GUIDE



## THE ATTENDANT

Automation that thinks for itself. And pays for itself.



**DOWNLOAD** the free Poolside Attendant app and follow the prompts to create a new user account.



**POWER ON and CONNECT** The Attendant, following the on-screen instructions to connect to a wireless network. Then pair your user account to The Attendant using the on-screen registration code.



**PERSONALIZE** The Attendant by completing the interview. Review the settings in Installer Mode; Site Info, Water Features, Devices and Water Flows.



**CONFIRM** the configuration by using the app to test each control or button to verify all is operating as expected.

Got questions? Email us at [support@poolside.tech](mailto:support@poolside.tech)  
or call at 267.810.0600